

CENTER 320 Series SOUND LEVEL METER

RS-232 / Data Logger / Mini Size



CE IEC 651 TYPE II

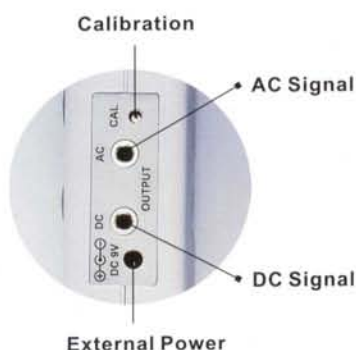
CENTER®

CENTER 320 series



CENTER 320

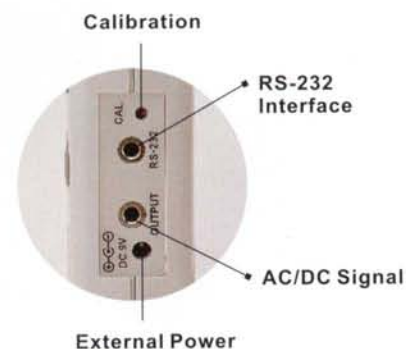
- 4 Digits Display
- MAX/MIN Function
- Level Range Display
- Resolution 0.1dB
- AC/DC Signal Output
- IEC 651 TYPE II



RS-232

CENTER 321

- RS-232 Interface
- Bargraph Indication
- MAX MIN Function
- Auto Ranging (30~130dB)
- Resolution 0.1dB
- Level Range Display
- AC/DC Signal Output
- Auto Power Off
- IEC 651 TYPE II



Specifications

Level Range: Lo= 30-80 dB
Med= 50-100 dB
Hi= 80-130 dB

Accuracy: $\pm 1.5\text{dB}$ (ref 94dB @1KHz)

Frequency Weighting: A, C

Time Weighting: Fast, Slow

Dynamic Range: 50 dB

Frequency Range: 31.5Hz to 8KHz

Microphone: Electret condenser microphone

Auxiliary Outputs: AC Output, DC Output

Battery Type: 9V, NEDA 1604, IEC 6F22, JIS 006P

Battery Life: 50 hours (with alkaline battery)

Operating Condition: 0°C to 40°C (<80%RH)

Storage Condition: -10°C to 60°C (<70%RH)

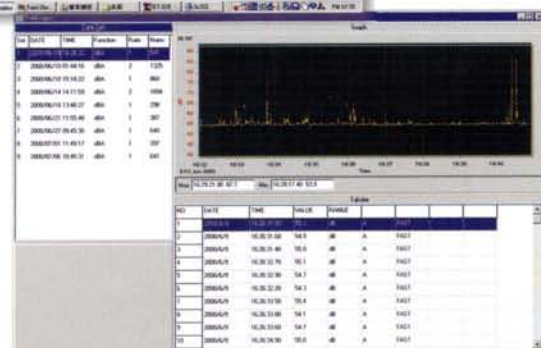
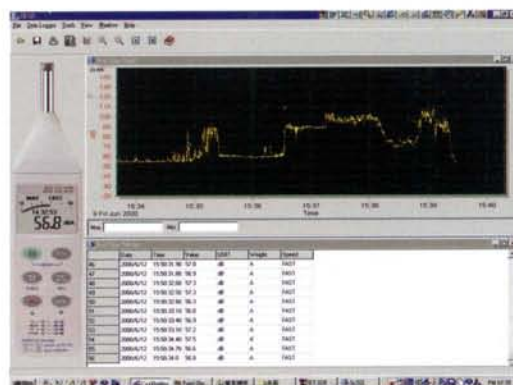
Dimensions: 275×64×30mm (10.8"×2.5"×1.2")

Weight: Approx.280g

SOUND LEVEL METER

RS-232 Software for Windows 95/98/2000

Real Time Control Window



Data Logger Control Window

Standard Tripod Connector

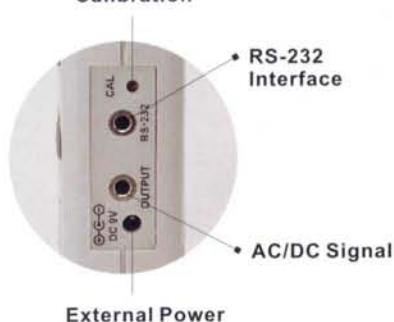


**RS-232
Data Logger**

CENTER 322

- RS-232 Interface
- With Window Software
- 32,000 Records Data Logger
- Bargraph Indication
- MAX MIN Function
- Auto Ranging (30~130dB)
- Clock Display
- Resolution 0.1dB
- Level Range Display
- AC/DC Signal Output
- Auto Power Off
- IEC 651 TYPE II

Calibration



External Power

Accessories

Model	CENTER 320	CENTER 321	CENTER 322
Battery	•	•	•
Manual	•	•	•
Carrying case	•	•	•
Calibration Screwdriver	•	•	•
Windscreen	•	•	•
RS-232 Cable		Option	•
Software		Option	•

CENTER 325 SOUND LEVEL METER



FEATURE

- Mini Size
- Newly Design Shape
- Low Cost High Performance
- MAX/MIN Function
- Level Range Display
- AC Signal Output
- Resolution 0.1dB
- IEC 651 TYPE II

Real Time Display With MAX MIN Recording



Level Range Display

SPECIFICATIONS

Level Range: Lo= 30-80 dB

Med= 50-100 dB

Hi= 80-130 dB

Accuracy: $\pm 1.5\text{dB}$ (ref 94dB @1KHz)

Frequency Weighting: A, C

Time Weighting: Fast, Slow

Dynamic Range: 50 dB

Frequency Range: 31.5Hz to 8KHz

Microphone: Electret condenser microphone

Auxiliary Outputs: AC Signal Output

Battery Type: 9V, NEDA 1604, IEC 6F22, JIS 006P

Battery Life: 60 hours (with alkaline battery)

Operating Condition: 0°C to 40°C (<80%RH)

Storage Condition: -10°C to 60°C (<70%RH)

Dimensions: 232×54×34mm (9.1"×2.1"×1.3")

Weight: Approx.200g

Accessories: Battery, Manual, Calibration Screwdriver
Windscreen.

* The specifications and other information in this catalogue are subject to change

CENTER®

CENTER TECHNOLOGY CORP.

4/F., NO.415, Jung-Jeng Rd., 238 Shu-Lin, Taipei, Taiwan

TEL: 886-2-26763926 E-Mail: center@centertek.com

FAX: 886-2-26763925 http ://www.centertek.com

Distributed by: